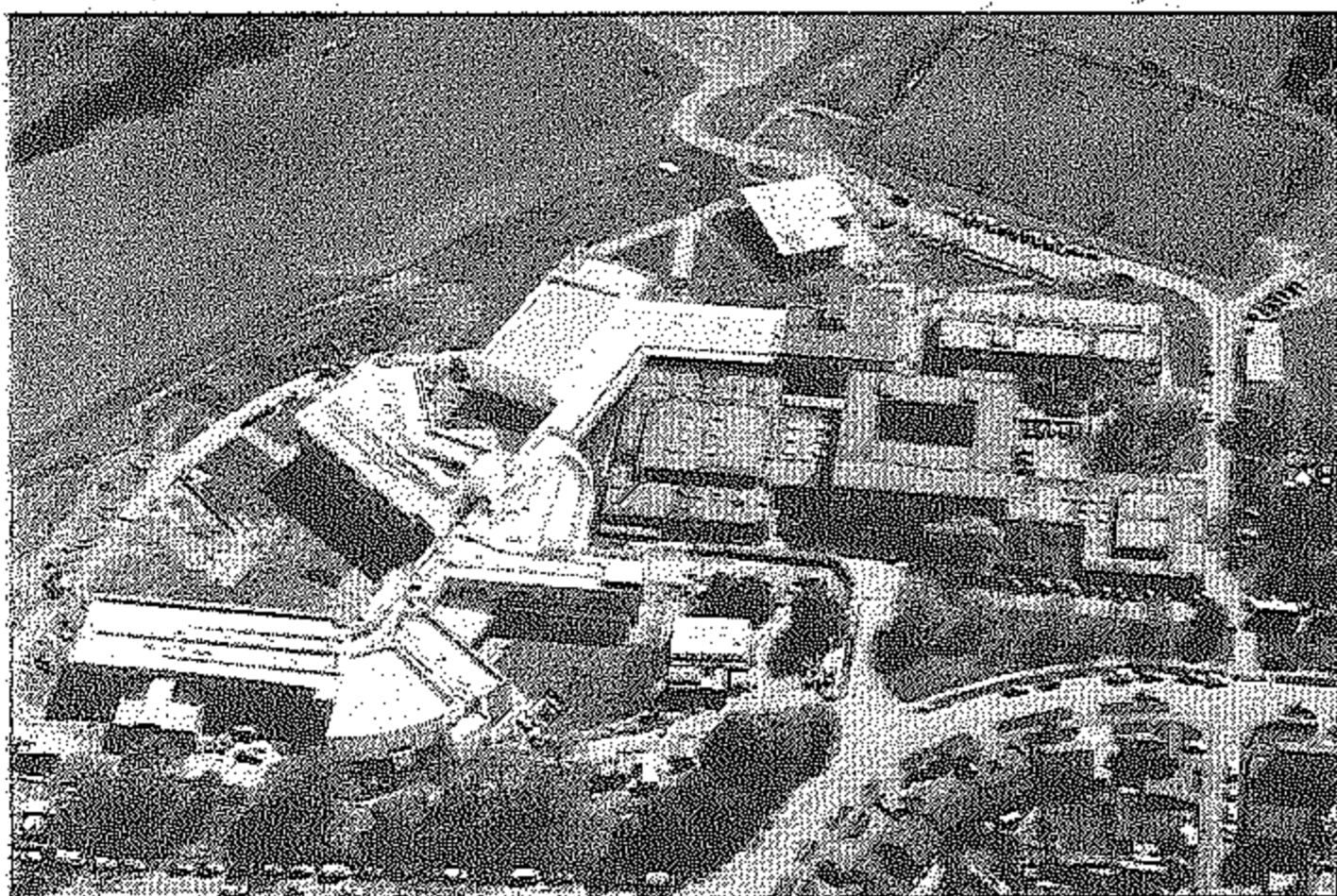




FOCUS ON EDUCATION



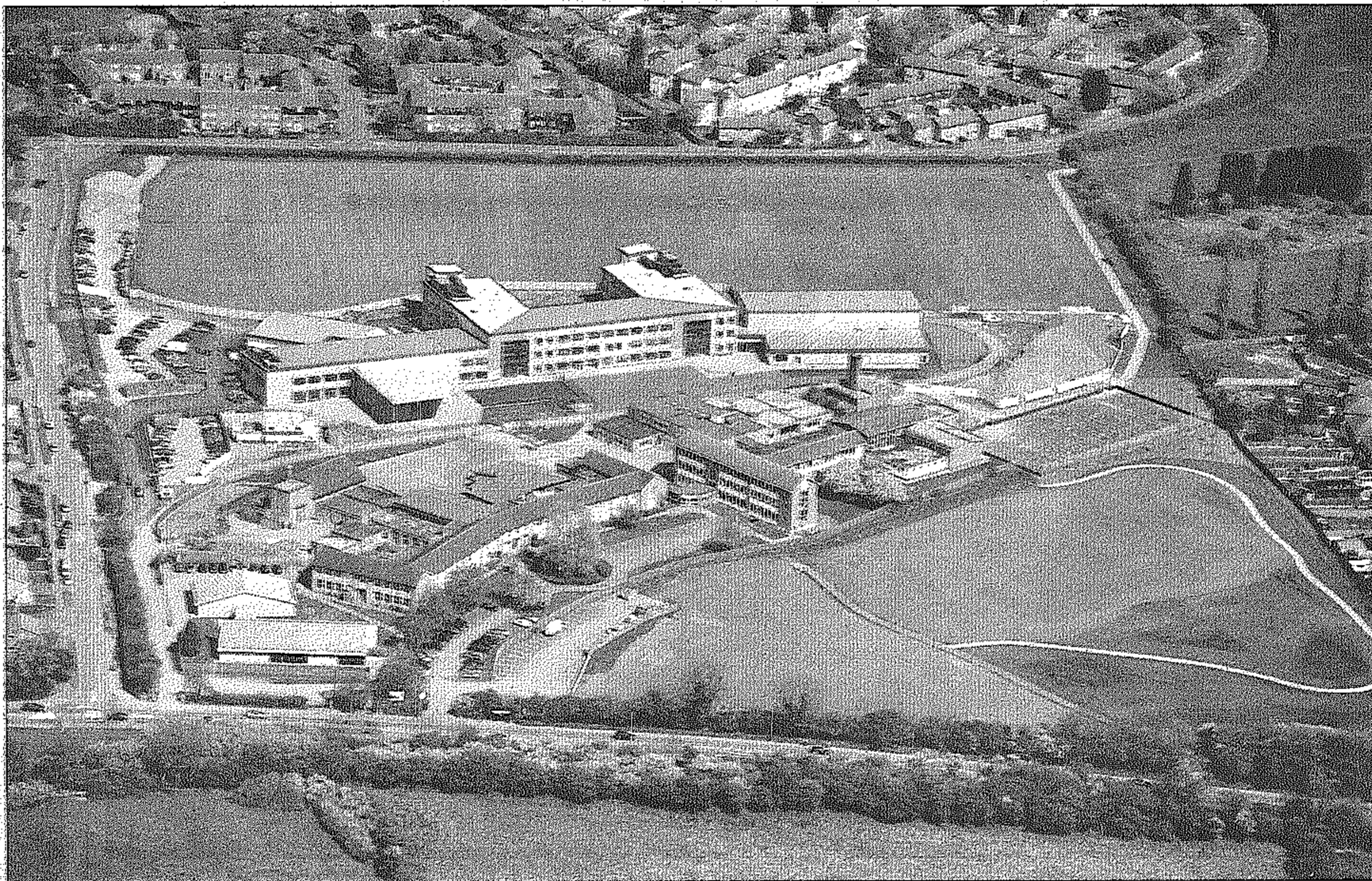
174026-25

FABULOUS: Judgemeadow Community College, in Evington



174026-32

PAVILION-STYLE: Soar Valley College, in Rushey Mead



PICTURES: ALEX HANNAM/174026-34

BREAKING NEW GROUND: Beaumont Leys School, the first to open in a £247million revamp of Leicester's secondary schools

Things are looking up for city schools

These bird's-eye pictures show the city's changing school landscape. A massive £247 million project to rebuild or refurbish Leicester's secondary schools is under way, with Beaumont Leys School the first to open fully to pupils this week.

As the main photograph on this page shows, it has been rebuilt. The new building is easily seen, instantly looking modern, next to its drab predecessor.

Workers will soon begin to demolish the cramped remnant from the 1960s, and landscape the area.

The pictures also show how school designs have changed over the decades.

The emphasis now is on

IAN WISHART LOOKS AT THE WAY A £247 MILLION BUILDING PROGRAMME IS CHANGING THE FACE OF SECONDARY EDUCATION

large, straight corridors with a lot of natural daylight, in contrast to the maze of dark corners in the buildings of the 1960s and 1970s that have been added to in a hotch-potch fashion over the years.

The Beaumont Leys design, which teachers and pupils themselves helped to shape, comes in the form of a long "high street" with classrooms and offices opening off it.

The pictures also show the stunning new Soar Valley College building, in Rushey

Mead, with its cricket pavilion-style design.

Due to open in a few weeks, the building will arch around a grassed sports area which will stand where the original school is located today.

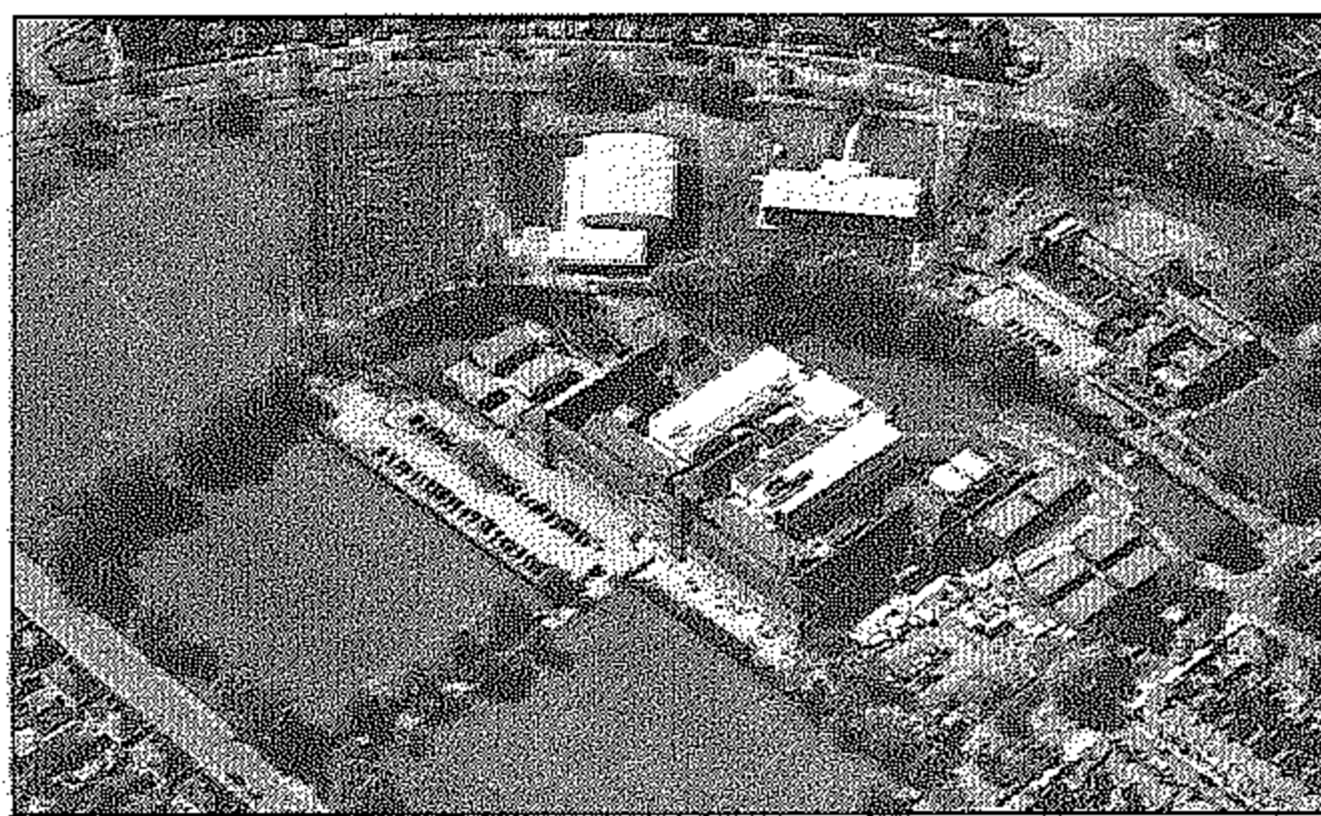
We also managed to capture the striking new design of Judgemeadow Community College, in Evington, also due to open shortly, and the new colourful section of the iconic Fullhurst College building, in Braunstone, which pupils have already been enjoying.

The hope is that the surroundings will contribute to an improvement in exam results, and also benefit the local communities, who will be able to use the facilities.

There are also radical changes in store at City of Leicester College and St Paul's School, both in Evington, and Rushey Mead School and Crown Hills College, which will soon never look the same again.

These are the next four schools to be reconstructed in the Building Schools for the Future programme and plans are already at an advanced stage.

See tomorrow's Leicester Mercury for a first look inside the new Beaumont Leys School.



174026-35

THE OLD AND NEW: The revamped Fullhurst College



174026-22

RADICAL CHANGES: St Paul's School, in Evington